

Mezzanine Inspection Report

| | | | |
|-----------------------|--|-------------------------|----------------------------------|
| Date: 03/20/15 | Station Name: C13 – King Street North | Mezzanine #: 112 | Completed By: Mike Butler |
|-----------------------|--|-------------------------|----------------------------------|

Summary

- All video scoping and pull string installation was completed at this mezzanine. Below is a summary of completed works:
- Video scoping and pull string installation for communication duct in faregate array. The communication duct run from Kiosk to Faregate Array is connected by two handholes, due to two 90-degree bends.
 - Video scoping for power duct in faregate array (via handholes).
 - Video scoping and pull string installation for power duct between Kiosk and Handhole 1.
 - Video scoping and pull string installation for power duct between Handhole 1 and Handhole 2.
 - Pull string installation in conduit between Handhole 2, Trough and AFC Panel.

Scoping of Faregate Array(s)

| Task | Yes/No | Notes |
|--|--------|--|
| Communications Duct – Handholes – Faregate Array (5 gates) | | |
| Was video scoping completed for the entire duct run? | Yes | Refer to "WMATA King St. North 4inch Comm faregates.avi". |
| Were pull strings installed at all faregates in the array? | Yes | |
| Were there any obstructions or blockages? Provide details of type and specific location. | No | Water intrusion evident, however it appears to be in good condition. |
| Is the duct at capacity? Provide additional details about the dimensions of ducts and number of wires. | No | 4" duct with less than 8 wires. |
| Power Duct – Handholes – Faregate Array (5 gates) | | |
| Was video scoping completed for the entire duct run? | Yes | Refer to "WMATA King St. North 6inch Power Faregates.avi" |
| Were there any obstructions or blockages? Provide details of type and specific location. | No | |
| Is the duct at capacity? Provide additional details about the dimensions of ducts and number of wires. | No | 6" duct with less than 10 wires. |
| | | |
| | | |
| | | |


| Scoping of Power Duct - Kiosk to AFC Panel | | |
|--|---|--|
| Task | Yes/No | Notes |
| Kiosk to Handhole 1 (Distance: 5') | | |
| Was video scoping completed for the entire duct / conduit run? | Yes | Refer to "WMATA King St. 6inch Power HH1 to Kiosk.avi" |
| Was pull string installed? | Yes | |
| Were there any obstructions or blockages? Provide details of type and specific location. | No | |
| Is the duct / conduit at capacity? Provide additional details about the dimensions of duct / conduit and number of wires. | No | 6" duct with less than 10 wires. |
| Handhole 1 to Handhole 2 (Distance: 32') | | |
| Was video scoping completed for the entire duct / conduit run? | Yes | Refer to "WMATA King St. 6inch Power HH2 to HH1.avi" |
| Was pull string installed? | Yes | |
| Were there any obstructions or blockages? Provide details of type and specific location. | No | Water intrusion evident, however it appears to be in good condition. |
| Is the duct / conduit at capacity? Provide additional details about the dimensions of duct / conduit and number of wires. | No | 6" duct with less than 10 wires. |
| Handhole 2 to Trough to AFC Panel (Distance: 45') | | |
| Was video scoping completed for the entire duct / conduit run? | No | Video scoping of conduits not required. |
| Was pull string installed? | Yes | |
| Were there any obstructions or blockages? Provide details of type and specific location. | No | |
| Is the duct / conduit at capacity? Provide additional details about the dimensions of duct / conduit and number of wires. | No | 2" conduit with less than 10 wires. |
| Observations / Issues / Next Steps | | |
| <ul style="list-style-type: none"> - Total distance of power route from Kiosk to AFC Panel is 82', including 37' of existing duct and 45' of existing conduit. - The AFC Panel is located two floors above mezzanine level in Room N201. | | |
| Sign Off | | |
| | GFP Representative | WMATA PRGM |
| Name: | Mike Butler | |
| Signature: |  | |
| Date: | 03/20/15 | |

Photo 1 – Existing duct / conduit layout on mezzanine floor

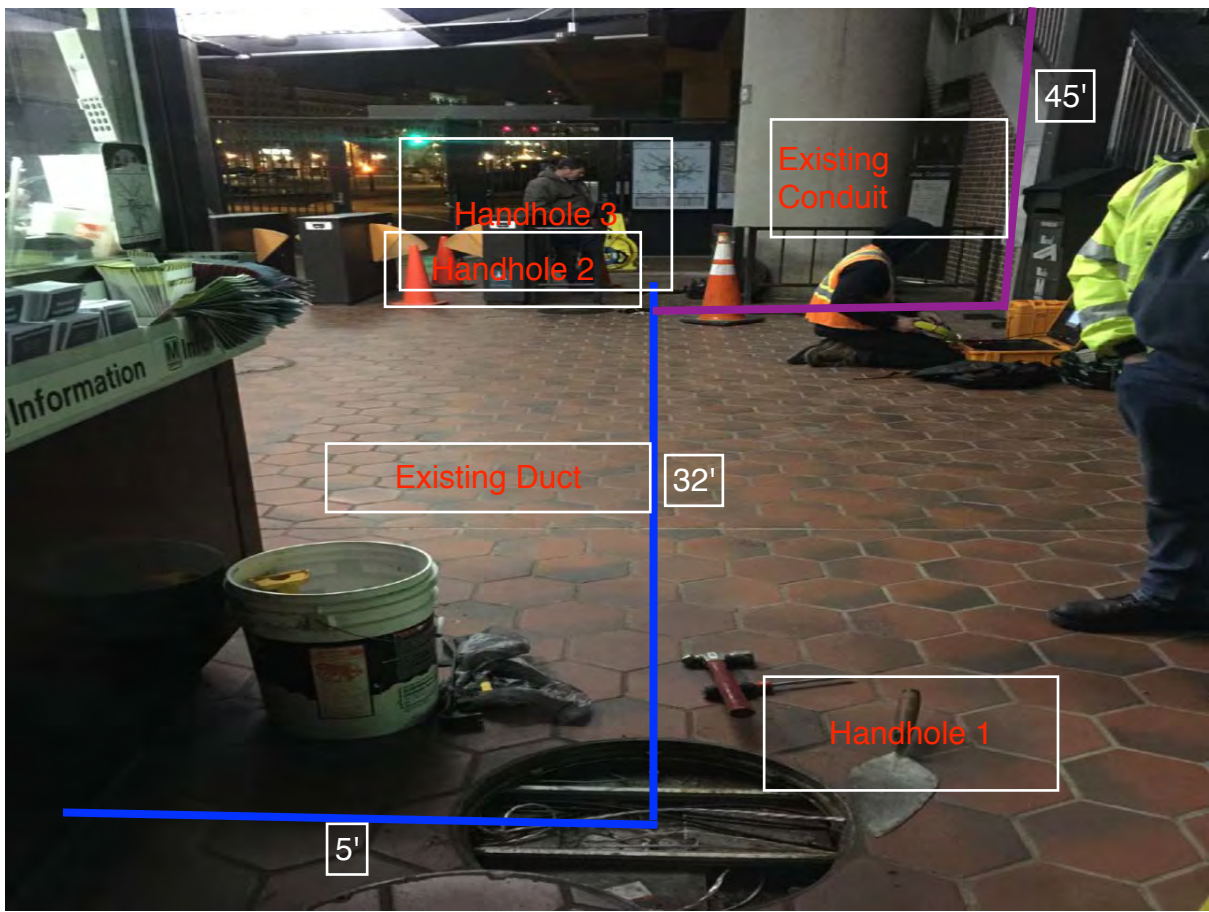
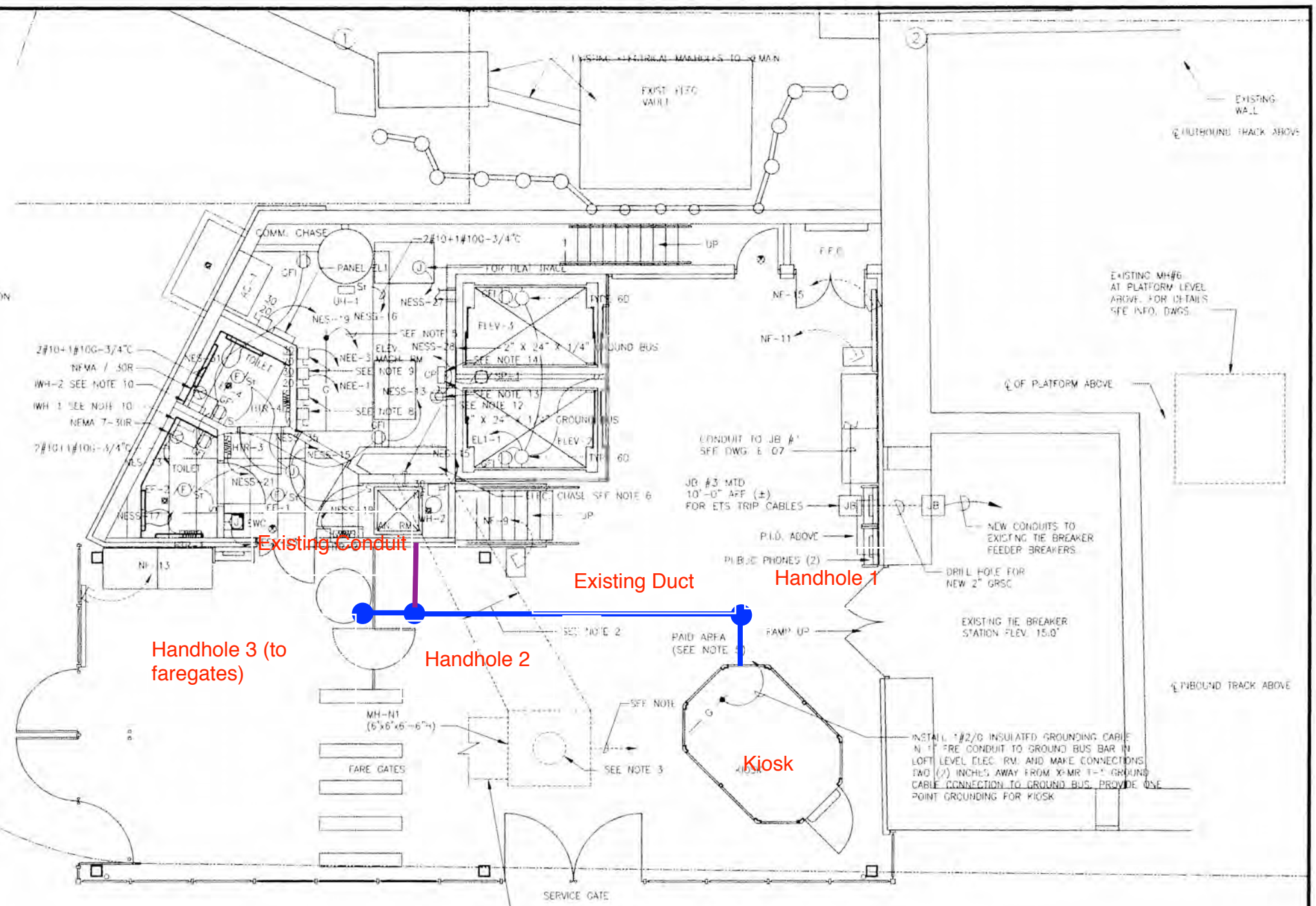


Photo 2 – Existing conduit feeding AFC Panel in Room N201.

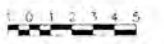


NOTES:

1. ALL EQUIPMENT IS NEW UNLESS OTHERWISE NOTED.
2. PROVIDE CONCRETE ENCASED FPE CONDUITS FOR ELECTRICAL CIRCUITS SERVING GROUND LEVEL LOADS. SEE DWG. E-08.
3. INSTALL PAVEMENT WITHIN COVER CIRCLE.
4. PROVIDE CONDUITS ENCASED IN CONCRETE UNDER FLOOR SLAB FROM MH-N1 TO LOADS REQUIRING ELECTRICAL POWER CONNECTION INCLUDING LIGHTED HANDRAIL. COORDINATE ROUTING WITH OTHER CONDUITS, PIPING AND UTILITIES. SEE DWG. E-08.
5. INSTALL 1#2/0 INSULATED GROUNDING CABLE IN 1" CONDUIT TO GROUND BUS BAR IN LOFT LEVEL ELECTRICAL ROOM AND MAKE CONNECTIONS.
6. PROVIDE CONTINUOUS CONDUITS BETWEEN GROUND LEVEL TO STUB-UP LOCATION IN ELEC. ROOM ON LOFT LEVEL.
7. POWER AND COMM. UNDERFLOOR DUCT ROUTING AND INSTALLATION SHALL BE IN ACCORDANCE WITH WMATA STANDARDS. SEE COMMUNICATION DRAWINGS FOR UNDER FLOOR DUCT LAYOUT.
8. DISCONNECT SWITCHES FOR ELEVATOR'S MAIN POWER SUPPLY. SEE DWG. E-08.
9. DISCONNECT SWITCHES FOR ELEVATOR CAB.
10. INSTANTANEOUS WATER HEATER WH SHALL BE PROVIDED WITH CORD AND PLUG TO MATCH RECEPTACLE.
11. JUNCTION FOR HEAT TRACE SHALL BE LOCATED MID-POINT OF PIPE RUN. COORDINATE WITH MECHANICAL/PLUMBING.
12. 2" CONDUIT SLEEVE MOUNTED 18" AFT CUT FLUSHED TO THE WALL.
13. COORDINATE LOCATION OF RECEPTACLE WITH THE CONTROL PANEL OF SP-1.
14. CONTROL PANEL PROVIDED UNDER DIVISION 15.



1 GROUND LEVEL PLAN
SCALE: 1/4"=1'-0"



AS-BUILT DRAWING
AUGUST 16, 2007
CONTRACT NO. 1C1011

DESIGNED: G.B. DATE: 7/28/04
DRAWN: C.N. DATE: 7/28/04
CHECKED: A.M. DATE: 7/28/04
APPROVED: P.C. DATE: 7/28/04

| NUMBER | DESCRIPTION | DATE | BY |
|--------|-------------|------|----|
| | | | |
| | | | |

| NUMBER | DESCRIPTION | DATE | BY |
|--------|-------------|------|----|
| | | | |
| | | | |

AS-BUILT
08/16/2007
DATE
GRUNLEY-WALSH
DESIGNER'S NAME

WASHINGTON METROPOLITAN AREA TRANSIT AUTHORITY

URS 2020 K STREET N.W., SUITE 300
WASHINGTON, DC 20006
TELE. 202.872.0277

GRUNLEY-WALSH
11910 Parklawn Drive, Suite U
Rockville, MD 20852

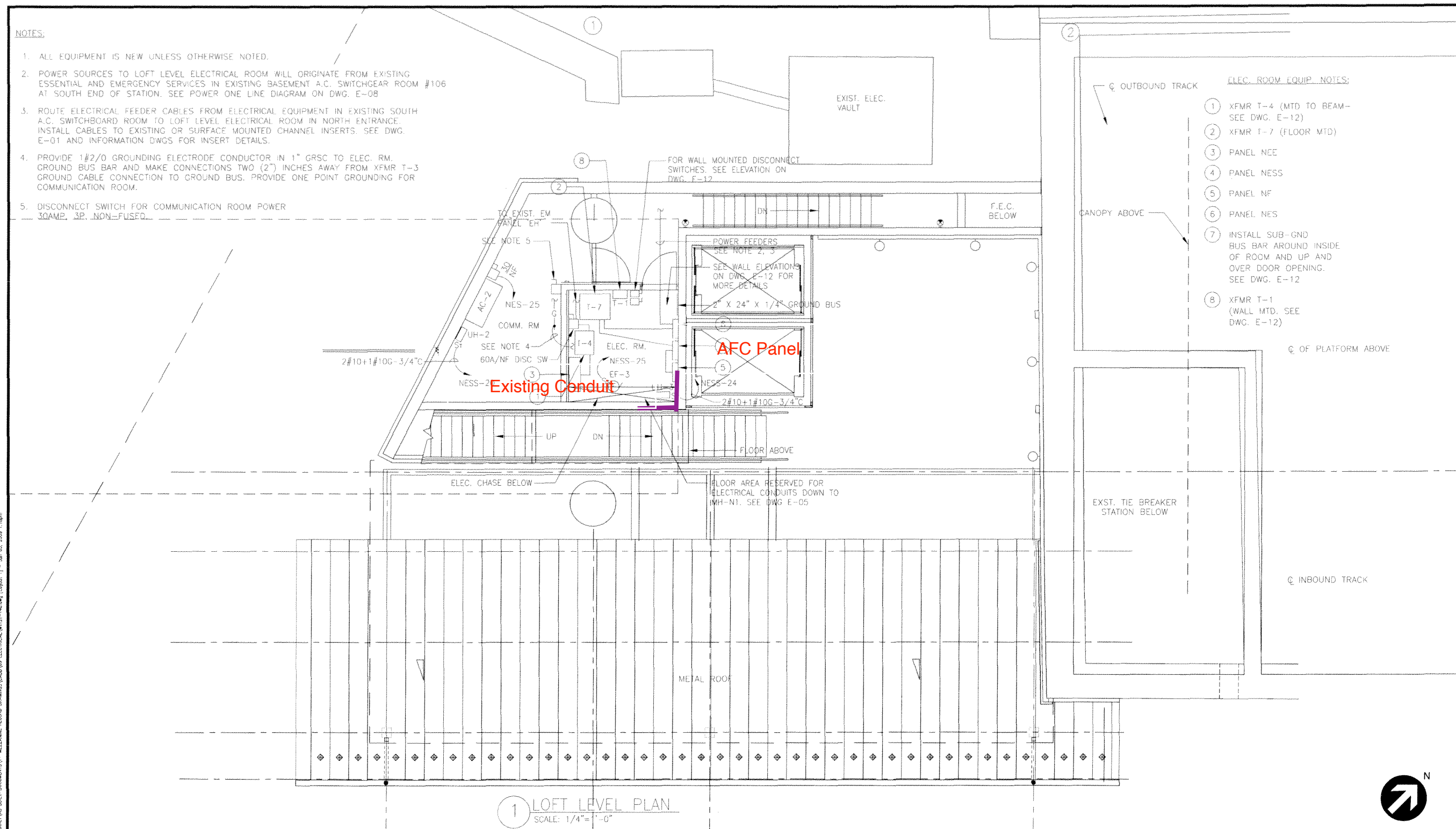
| | | | |
|---|-------------------|-----------------------|------------|
| HUNTINGTON ROUTE KING STREET STATION | SCALE: 1/4"=1'-0" | DRAWING NO. C10L-E-05 | MII121-147 |
| GROUND LEVEL PLAN | 1 0 1 2 3 4 5 | | |

NOTES:

1. ALL EQUIPMENT IS NEW UNLESS OTHERWISE NOTED.
2. POWER SOURCES TO LOFT LEVEL ELECTRICAL ROOM WILL ORIGINATE FROM EXISTING ESSENTIAL AND EMERGENCY SERVICES IN EXISTING BASEMENT A.C. SWITCHGEAR ROOM #106 AT SOUTH END OF STATION. SEE POWER ONE LINE DIAGRAM ON DWG. E-08
3. ROUTE ELECTRICAL FEEDER CABLES FROM ELECTRICAL EQUIPMENT IN EXISTING SOUTH A.C. SWITCHBOARD ROOM TO LOFT LEVEL ELECTRICAL ROOM IN NORTH ENTRANCE. INSTALL CABLES TO EXISTING OR SURFACE MOUNTED CHANNEL INSERTS. SEE DWG. E-01 AND INFORMATION DWGS FOR INSERT DETAILS.
4. PROVIDE 1#2/0 GROUNDING ELECTRODE CONDUCTOR IN 1" GRSC TO ELEC. RM. GROUND BUS BAR AND MAKE CONNECTIONS TWO (2") INCHES AWAY FROM XFMR T-3 GROUND CABLE CONNECTION TO GROUND BUS. PROVIDE ONE POINT GROUNDING FOR COMMUNICATION ROOM.
5. DISCONNECT SWITCH FOR COMMUNICATION ROOM POWER 30AMP, 3P, NON-FUSED.

ELEC. ROOM EQUIP. NOTES:

- ① XFMR T-4 (MTD TO BEAM- SEE DWG. E-12)
- ② XFMR T-7 (FLOOR MTD)
- ③ PANEL NEE
- ④ PANEL NEE
- ⑤ PANEL NF
- ⑥ PANEL NES
- ⑦ INSTALL SUB-GND BUS BAR AROUND INSIDE OF ROOM AND UP AND OVER DOOR OPENING. SEE DWG. E-12
- ⑧ XFMR T-1 (WALL MTD. SEE DWG. E-12)



1 LOFT LEVEL PLAN
SCALE: 1/4"=1'-0"



P:\PROJECTS\2004\104-00\WATA King Street Station\AS-BUILT\AS-BUILT-DRAWINGS\11-MEZZANINE RECORD DRAWINGS\AS-BUILT\1101-148.dwg [Layout 1] - Jan 05, 2009 11:08am

| | | | |
|--|--|--|--|
| AS-BUILT DRAWING AUGUST 16, 2007 | | CONTRACT NO. 1C1011 | |
| WASHINGTON METROPOLITAN AREA TRANSIT AUTHORITY | | | |
| 2020 K STREET N.W. SUITE 300 WASHINGTON, DC 20006 TELE. 202.872.0277 | | 11910 Parklawn Drive, Suite U Rockville, MD 20852 | |
| HUNTINGTON ROUTE KING STREET STATION | | LOFT LEVEL PLAN | |
| SCALE 1/4"=1'-0" | | DRAWING NO. C10L-E-06 | |
| | | M1121-148 | |

| | | |
|----------|------|---------|
| DESIGNED | C.B. | 7/28/04 |
| | | DATE |
| DRAWN | K.N. | 7/29/04 |
| | | DATE |
| CHECKED | A.M. | 7/28/04 |
| | | DATE |
| APPROVED | R.C. | 7/28/04 |
| | | DATE |

| REFERENCE DRAWINGS | |
|--------------------|-------------|
| NUMBER | DESCRIPTION |
| | |
| | |

| REVISIONS | | |
|-----------|----|-------------|
| DATE | BY | DESCRIPTION |
| | | |
| | | |

AS BUILT
08/16/2007
DATE
I CERTIFY THAT THIS DRAWING ACCURATELY
DEPicts THE WORK AS CONSTRUCTED.
[Signature]
AN OFFICER OF THE DESIGN BUILDERS
GRUNLEY WALSH
CONTRACTOR'S NAME